

# CME Earns High Score for Safety

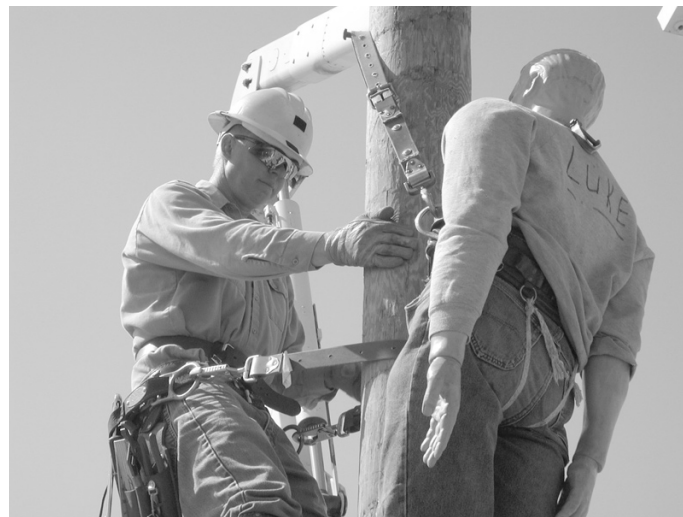
Charles Mix Electric is proud to announce that it has received national recognition from the National Rural Electric Safety Accreditation Program for its safety practices. Co-ops go through an accreditation process every three years. CME was recently congratulated for receiving safety accreditation with an overall score of 98% on their recent review.

The accreditation application process consists of three parts: a field observation, where trained observers inspect our facilities and watch the line crews perform various tasks while scoring the workers on their use of safe work habits and procedures; an electronic answer portion, completed on-line, where a written narrative answers questions on safety policies, efforts to raise public safety awareness, community education efforts, and many other areas; and a verification process, where six random documents are requested to support the written application. CME scored a 97% on the field observation, a 96% on the electronic answer portion, and a 100% on the verification documents. The field observation

accounted for half of the co-op's total score, while the on-line portion and document verification weighed in at 30% and 20%, respectively.

Kenneth Brubaker, manager of safety programs for the National Rural Electric Cooperative Association, says that the goal of the safety accreditation program is to "preserve life and prevent injuries; to establish electric utility safety and loss control standards; to recognize you and your people who work every day to maintain a safe work environment; and to compliment your mission of reliable electric service for your members."

CME has been accredited eleven times previously, showing that safety has always been, and will continue to be, a top priority.



Practicing rescue procedures is an important part of safety training. In the event a lineman is ever injured or rendered unconscious while on a pole, his co-workers have the skills needed to lower him safely to the ground. Here, former temporary lineman Jerad Groom "rescues" the mannequin in a pole-top training exercise.

## Home & Garden

# Do Spring Yard Work Safely

Electrical and gas-powered appliances can help make short work of sprucing up your yard and lawn this spring. Appliances can be used for mowing the lawn, trimming bushes and flowers, and

cutting tree limbs. Appliances that are used for yard work should be labeled for outdoor use. Here are some tips for practicing safety precautions



Courtesy of The Toro Company

when working with appliances outside of the home:

- Unplug electrical tools and disconnect spark plug wires on gasoline-powered tools before making adjustments or clearing jams near moving parts.
- Be sure power tools are turned off and made inoperable if they must be left unattended, to prevent use by children.
- Handle gas carefully. Never fill gasoline tanks while machinery is on or when equipment is still hot. Wipe

up spills. Store gas in an approved container away from the house. Finally, never smoke or use any type of flame around gasoline or gasoline-powered equipment.

- Never work with electrical power tools in wet or damp conditions.
- Be sure that extension cords are in good condition, are rated for outdoor use, and are the proper gauge for the electrical capacity of the tool.
- Inspect the mower periodically for potential hazards.

# Energy Mortgages Help Pay for Efficiency

The cost of owning a home may soon decrease for the owners of energy-efficient houses. Thanks to recent changes in mortgage lending rules among U.S. banking institutions, the value of energy efficiency measures, such as attic insulation or energy-efficient heating systems, can now be included in the calculations used to qualify borrowers for home loans.

The new energy mortgages come in two varieties:

- For the purchase of new homes, the Energy Efficient Mortgage allows lenders to consider how much fuel the home will use in the future. Since efficient homes tend to have lower utility costs, this mortgage allows borrowers to apply those monthly savings toward the purchase of a more expensive home.

- For improvements to existing homes, the Energy Improvement Mortgage can be used to finance the installation of new energy-efficiency measures.

Both mortgages allow homeowners to build equity faster by taking advantage of their home's efficiency.

Efficient homes provide benefits that go beyond fuel savings. They are warmer in the winter and cooler in the summer, and because they are less drafty, they provide a cleaner, quieter, and more comfortable indoor environment.



DOE/NREL

And if you choose to sell your efficient home, it may be more valuable, too. A recent report in the *Appraisal Journal* estimated that the market value of your home could increase by \$20 for every \$1 decrease in your annual energy costs.

All the major underwriters of residential mortgages—including Fannie Mae, Freddie Mac, HUD, and the VA—now offer specialized loans for energy efficient homes. Ask your local lender for details.

## Something New

### Murphy

